

RRU LIGHT WALL SUPPORT

ONLY FITS
ERICSSON EQUIPMENT

▶ FITS ERICSSON RRU MODELS: RRUW, RRUS 01, RRUS 11

RRU LIGHT WALL SUPPORT is designed for installation of one RRU unit or one RBS 6302 unit on wall.

FLEXIBILITY

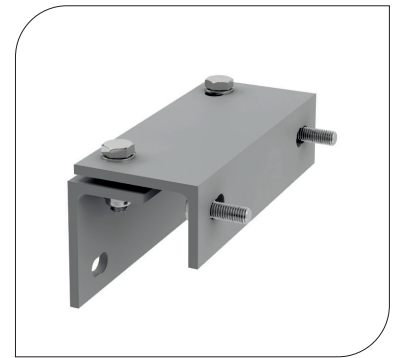
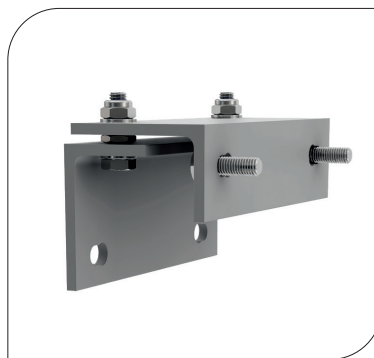
The support is easy to install towards the wall. A template for drilling is included. The fixing angles have two flanges with different length which makes it possible to choose long or short distance from wall. The long distance makes it possible to fit a PSU on the backside of the RRU when needed.

QUALITY

All components are made of anodized aluminium and acid proof stainless steel which gives the support excellent corrosion resistance.

EASY ASSEMBLY

Handling and installation is very easy thanks to the light weight material of the product.



ORDER AND TECHNICAL INFORMATION

DRAWING NO:	CD 990658			
FUNCTION DESCRIPTION:	A two level support for installation of one RRU or one RBS 6302 on any wall. Containing two sets of angle brackets with different length sides which make it possible to choose distance from the wall and also fit a PSU when needed.			
MECHANICAL DATA:				
Angle profiles:	Aluminium, Nature anodized 20µm			
Fasteners:	Acid proof stainless steel. (Note! Fasternes for wall are not included).			
Distance from wall:	Short = 84 mm (3,3 in) Long = 125 mm (4,9 in)			
PACKAGE DIMENSIONS:	LENGTH:	WIDTH:	HEIGHT:	WEIGHT:
	280 mm (11 in)	90 mm (3,5 in)	90 mm (3,5 in)	2,5 kg (5,5 lb)

NOTE! RRU is not included.